



**A GLOBAL GLASS HUB PRODUCING  
SOLUTIONS FOR THE PROBLEMS OF THE  
FUTURE**



# Corporate Presentation

# In a Nutshell

- One of Turkey's leading companies in glass processing.
- Çağdaş Cam, a publicly traded company, holds a strong position, particularly in the home appliance glass, energy glass, and commercial glass segments.
- We rank among the companies with the largest glass processing capacities in Europe. With an annual production capacity of 1,000,000 m<sup>2</sup>, we possess the largest commercial cooler glass production capacity in Europe.
- Winner of the first prize in the Industrial Design category at the 2025 German Design Awards.



# Corporate Milestones

**1975**

First production commenced in Aydın Kuyucak.

**1985**

Production of first Insulated glass products

**1995**

Start of operations at the Kuyucak Facility

**2005**

First Tempered Glass Processing achieved

**2010**

Opening of the New Factory on a 30,000 m2 site in Kuyucak.

**2015**

Establishment of the Facility in Nazilli OIZ.

**2021**

Factory Opening in Manisa OIZ.

**2022**

Purchase of 30,000 m2 land in Manisa OIZ.

**2023**

Renewable Energy Investments initiated (1 MW SPP in Nazilli OIZ).

**2024**

Initial Public Offering (IPO).

**2025**

Start of Construction for the 2nd Factory in Manisa OIZ.

**2025**

Capacity increase realized in both Manisa 1 and Kuyucak Factories



# Our Products



Solar Energy  
Glass



Home Appliance  
Glass



Oven  
Glass



Hob  
Glass



Vertical Bottle  
Cooler Glass



Thermal  
Heater Glass



Greenhouse  
Glass



Flat Glass



Laminated  
Glass



Coated Glass

# Production Facilities

## Manisa OIZ 1 Facility

- 14,502 m<sup>2</sup> open area - 26,410 m<sup>2</sup> closed area.
- Annual Capacity: 5,000,000 m<sup>2</sup>/year.
- A capacity increase of 2,500,000 to 5,000,000 m<sup>2</sup>/year is targeted with the completed additional building.
- Features a 2.6 MW Rooftop SPP investment.

Product Groups: Solar Panel Glass.



## Manisa OIZ 2 Facility

- Construction is ongoing on the 30,000 m<sup>2</sup> land acquired in the 6th zone of Manisa OIZ in 2022.
- Construction is targeted to be completed by mid 2026.

Product Groups: Undisclosed due to commercial confidentiality.



# Production Facilities

## Kuyucak Facility

- 3,098 m<sup>2</sup> open area - 17,344 m<sup>2</sup> closed area.
- Annual Capacity: 2,551,678 m<sup>2</sup>/year.

**Product Groups:** Home appliance refrigerator glass, oven glass, vertical bottle cooler cabinet glass, commercial market-type cooler glass, ice cream cabinet glass, and high-performance greenhouse glass.



## Nazilli OIZ Facility - Warehouse

- 2,914 m<sup>2</sup> open area - 7,086 m<sup>2</sup> closed area.
- Annual Capacity: 37,000 tons/year.
- Equipped with a 1.1 MW Rooftop SPP.

**Product Groups:** Commercial glass products, including flat glass, mirrors, laminated, and coated glass.

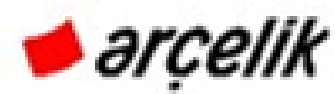


# Key Partners

We maintain long-standing commercial relationships with leading companies in their respective sectors.



## Home Appliances and Commercial Coolers



## Solar PV Panels



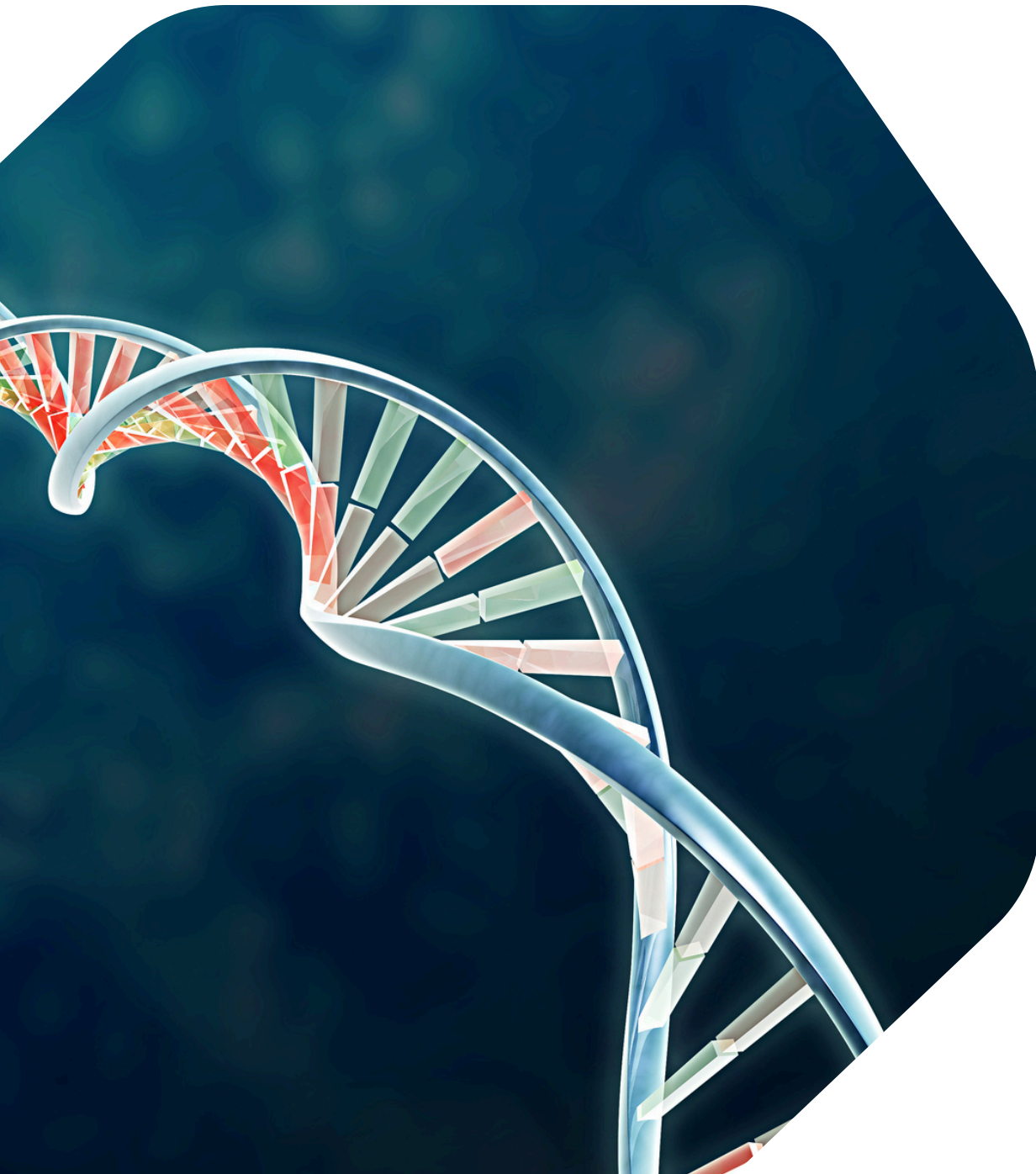


**As a global supplier to the Renewable Energy and Home Appliances sectors**

**we export to 28 countries across 4 continents**

**positioning ourselves as a reliable alternative business partner to Asian manufacturers**

# Corporate DNA



- **INNOVATIVE:** We rapidly adapt to technological, industrial, and social innovations.
- **INCLUSIVE:** We prioritize the benefits of all stakeholders and aim for collective development
- **SUSTAINABLE:** We increase productivity while efficiently utilizing renewable resources without harming the environment. Our environmental policy focuses on efficient natural resource use and waste management (ISO 14001 certified). Through renewable energy investments, we achieve an annual CO2 emission reduction of 3,200 tons, driving towards a zero-carbon emission target.
- **RESILIENT:** Organizational agility and financial strength allow us to respond swiftly to global uncertainties and economic shocks.
- **EGALITARIAN:** We maintain an equal stance towards everyone regardless of gender, religion, language, race, or class, focusing entirely on merit.
- **TRANSPARENT:** We operate in full compliance with ethical rules and laws, demonstrating a transparent and accountable management approach (aligned with CMB Corporate Governance Principles).

# Sustainability and ESG

## ✓ Environmental Policy

- Environmental policy focused on the efficient use of natural resources and waste management.
- ISO 14001 Environmental Management System certification.
- Environmental impact assessment in production processes and continuous improvement.

## ✓ Occupational Health and Safety

- Continuous training and awareness-raising in line with the target of zero occupational accidents.
- ISO 45001 Occupational Health and Safety Management System certification.
- A safe working environment established through risk assessment and preventive measures.

## ✓ Sustainability

- Annual CO<sub>2</sub> emission reduction of 3,200 tons through renewable energy investments.
- Zero carbon emission target.
- LED lighting transformation and smart energy management systems.
- ISO 50001 Energy Management System implementations.

## ✓ Corporate Governance

- A transparent and accountable management approach towards all our stakeholders.
- A balanced and effective board of directors that includes independent members.
- Compliance with CMB (Capital Markets Board) Corporate Governance Principles and continuous improvement.
- Effective risk management and internal control systems.



# Competitive Advantages

## ✓ High Standards

Certified with SGCC ANSI, ISO 9001, ISO 10002, ISO 14001, ISO 31000, ISO 45001, alongside TS 3539, TS 11502, and TS EN 12150 product quality certificates.

## ✓ Design Center and R&D

Recognized in 2017 as the first glass company in Turkey to have a dedicated design center.

We operate with a 19-person expert team, boasting over 42 completed innovative design projects, university collaborations, and numerous patents.

## ✓ Customer-Oriented Approach

Flexible delivery options tailored to customer preferences.

Customized product development based on customer requirements.

## ✓ Flexible & Agile Production

Operating 24/7 across 3 facilities, we offer customized product development and flexible delivery.

Our high production capacity and end-to-end management grant us the agility to navigate market uncertainties swiftly.

## ✓ Strong Distribution Channels

Extensive local and international network, with focused marketing and distribution activities in France, Italy, Tunisia, Morocco, and Algeria.

## ✓ Technological Leadership

Pioneers of 2 mm Glass Processing and Laser Technology in Turkey, producing high value-added products.

## ✓ Strategic Partnership

Over 30 years of strong cooperation with Şişecam.

# Strategic Leadership

Through proactive management leadership, the company has effectively mitigated the negative impacts of global economic fluctuations and successfully adapted to changing conditions.

- 
- A dark blue, stylized maze graphic occupies the left side of the page. In the center of the maze, a black rocket ship is positioned vertically, pointing upwards. A bright blue light emanates from the base of the rocket, suggesting it is launching or taking flight.
- **Cost Optimization:** Profitability maintained through effective cost-cutting strategies.
  - **Strategic Foresight:** Sales figures maintained through timely capacity investments.
  - **Capacity Increases:** Bifacial glass production line commissioned in Manisa OIZ. A 60% capacity increase in insulated glass at Aydın Kuyucak.
  - **Risk Management:** Market risks effectively managed through strong liquidity, low debt, and investment portfolio diversification; product risks via product liability and recall insurance; and concentration risks through customer and sector diversification.
  - **Strategic Positioning:** The advantage of entering the upcoming growth period equipped with an optimal cost structure and increased capacity.

# Future Vision and Goals

## Short-Term Goals (1-2 years)

- Expand the export market and increase the share of exports in total revenue.
- Increase the number of export destination countries.
- Gain market share in the US processed glass market

## Medium-Term Goals (3-5 years)

- Increase the number of patents, utility models, and registered designs through R&D and design efforts.
- Increase the production and diversity of value-added products.
- Meet the entire energy demand of the facilities with renewable energy.
- Expand the distribution network by collaborating with local partners in target markets.
- Develop innovative products by investing heavily in R&D activities.

## Long-Term Strategic Goals

- Become a global innovation leader in the industry.
- Ensure a sustainable competitive advantage through continuous improvement of product quality and supply chain efficiency.
- Become the global industrial glass processing firm with the largest market share and brand value outside of Asian manufacturers



# Social Responsibility

## ITU MATAM EARTHQUAKE RESEARCH CENTER

We closely monitor the sensitivities and needs of the social environment we are a part of, and accordingly, we prioritize social responsibility projects in the areas of education, earthquake and disaster preparedness, and environmental sustainability (especially combating drought).

In this context, we sponsored the establishment of the solar energy infrastructure for the Istanbul Technical University Marmara Sea Earthquake Research Center (ITU MATAM), which will provide uninterrupted energy following a major earthquake.



[cagdascam.com](http://cagdascam.com)





+90 256 371 45 60

info@cagdascam.com.tr

Fatih Mh. Sanayi Bölgesi No:33  
09930 Kuyucak - AYDIN

www.cagdascam.com

linkedin.com/company/cagdasca

*Cagdas Cam of Turkiye*

## CAGDAS CAM of TURKIYE

Better, Faster, Trendsetter Glass Ecosystem



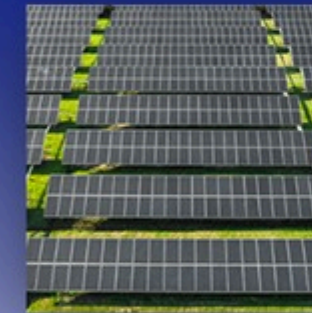
Home Appliances



Glass Ceramic  
With Ilva Cagdas



Food Display



Solar



Greenhouse



Glass Trading



cagdascam.com.tr

